



# Ford Fiesta Sprint Cup Zolder Supercar Madness



# Welcome



**Race Director/  
Clerck of the course Team:**

Jaap Molmans  
Max Braams  
Bobbe Veldkamp  
Annemieke Veldkamp  
Wilbert Vos

**Stewards:**

Gerard du Pre / Yvette van Eck  
Joost Demeestere / Amber Pauwels (trainee)

**Secretary of the meeting**

Christine van Dongen

**Team Relations:**


Eric de Jongh

**Promotor:**

Renata Aartsen  
Dick van Elk







*Sportity*

For direct event information please download  
the Sportity app and insert this password:

**Mazda2023**  
**VRM2023**

**Time schedule V10**



Available on the  
**App Store**



Get it on  
**Google play**





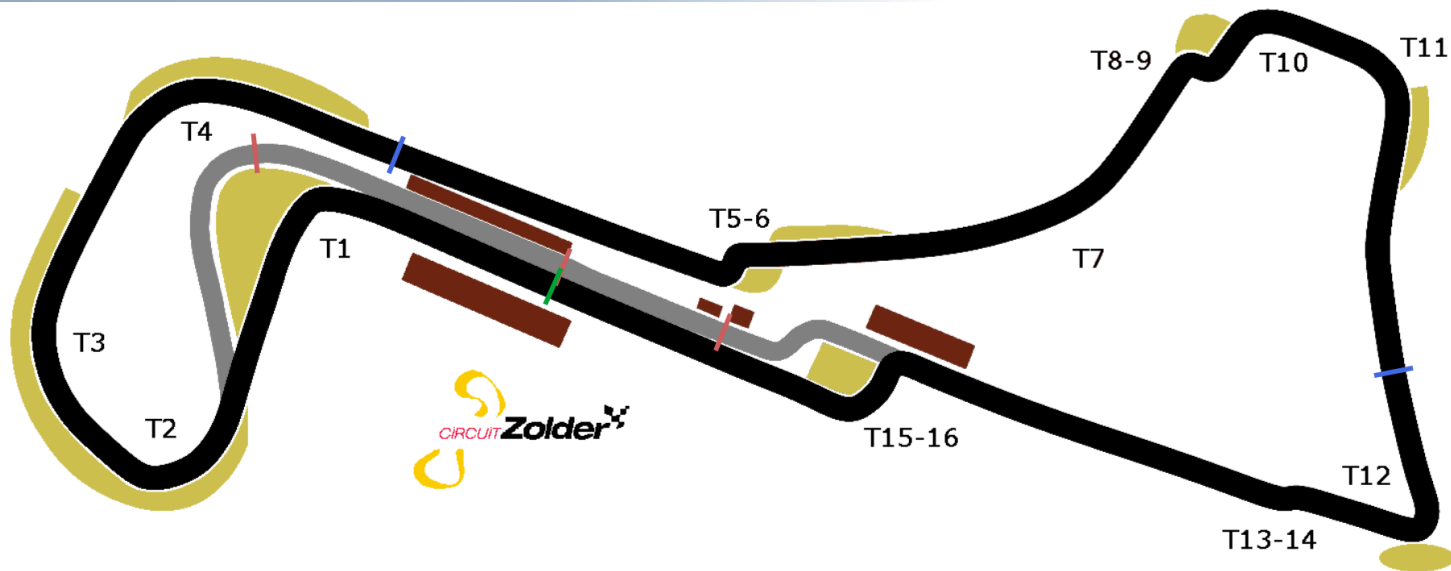
# Review Spa Euroraces



- Routing results after a training or a race
  - Internal result with penalties (track-limits ect.) given during the training or the race
  - Further Investigations (when necessary Onboards/CCTV/Drivers)
  - Provisional result (signed by the race-director) and published on Sportity app
  - After 30 minutes, final result (signed by stewards of the meeting)
- If you think we missed something on the provisional result, or when there is no provisional result after 30 minutes after the race, please come to us
- If you don't agree with the decision made, there is always the possibility to use the right of protest (against a fee) and the stewards of the meeting will review the decision (requested and paid within 30 minute timeframe)



# The Circuit



## Circuit Zolder

- Length: **4.000** meter
- Direction: **Clockwise**
- Start: **Standing start**
- Pole Position: **Left Side**
- Pit Exit: **Exit of Turn 1, track right**
- Penalty Area: **Underneath Podium,**
- Pitlane Speed: **60 KM/H**



# MOTOR SILENCE

## No engine running

### SATURDAY

BETWEEN 12.00H-13.00H

AFTER 18.00H

### SUNDAY

BEFORE 10.00H

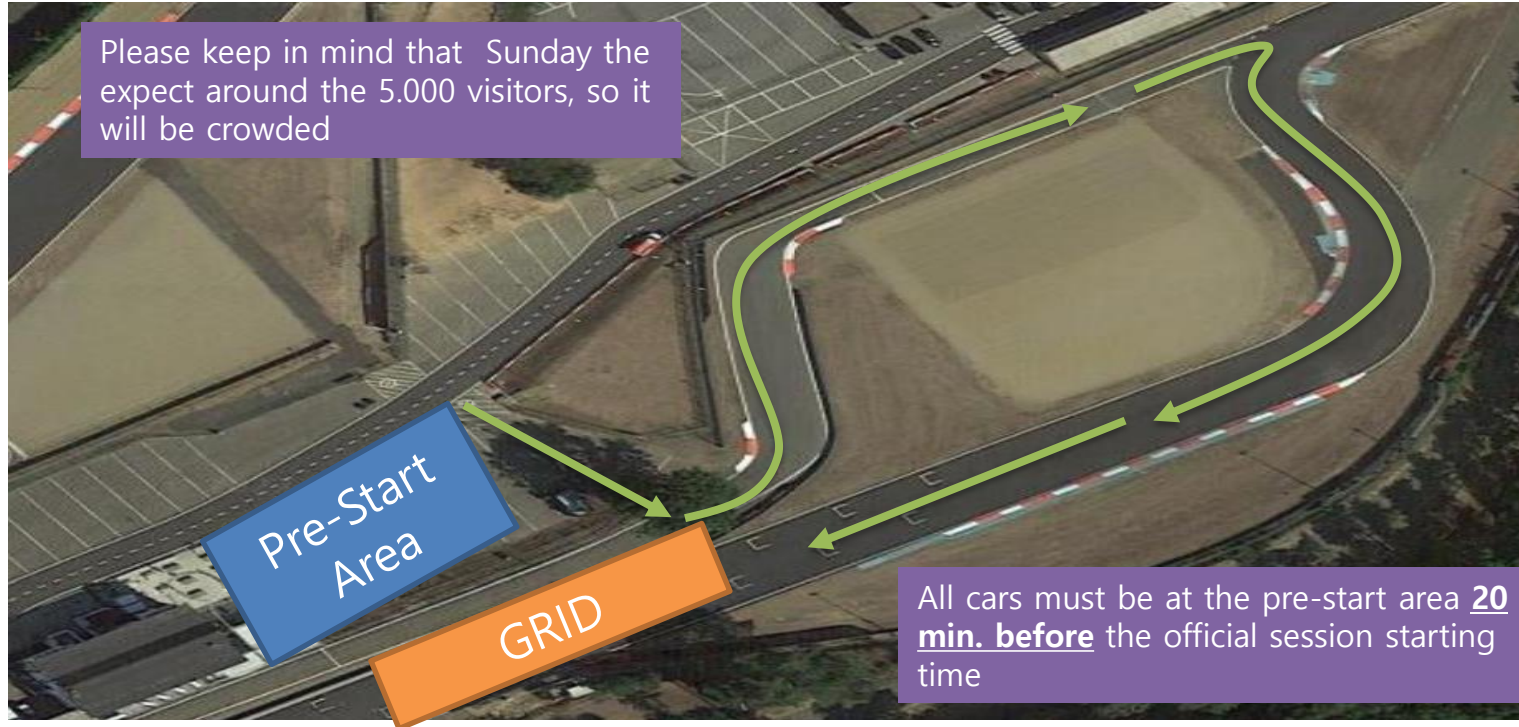


# Logistics (Training)





# Logistics (RACE)





# Off Track after session

- After the chequered flag → Full cooldown lap
- Qualification and races → go to Parc Ferme
- First 3 cars stop under the podium and must immediately be driven by a team member to Parc Ferme





# Pitlane and Points of Interest

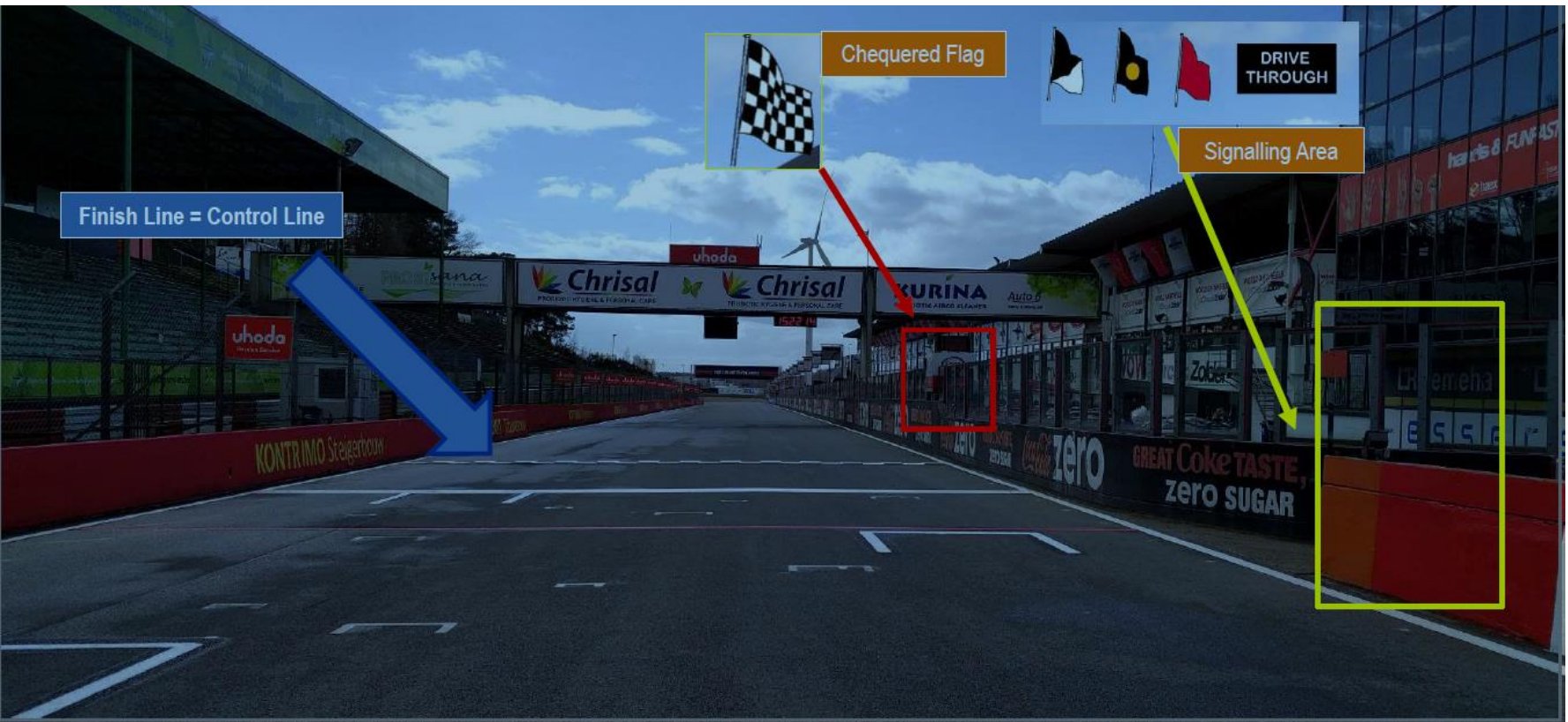




# Finish Control Line | Signalling Area

FORD **FIESTA**  
SPRINT CUP

POWERED BY **Hankook**  
driving emotion





# White Line Pit Lane Exit





# Penalty Box



— Technical Flag (Meatball)



— Black Flag



— Warning Flag



# Basics – Starting Procedure

- Know your grid position
- No tyre trolleys on the grid
- Wait for the warm-up lap to start (green flag & green lights in gantry)
- 5 seconds signal – All Red lights on – All Red lights out = start race





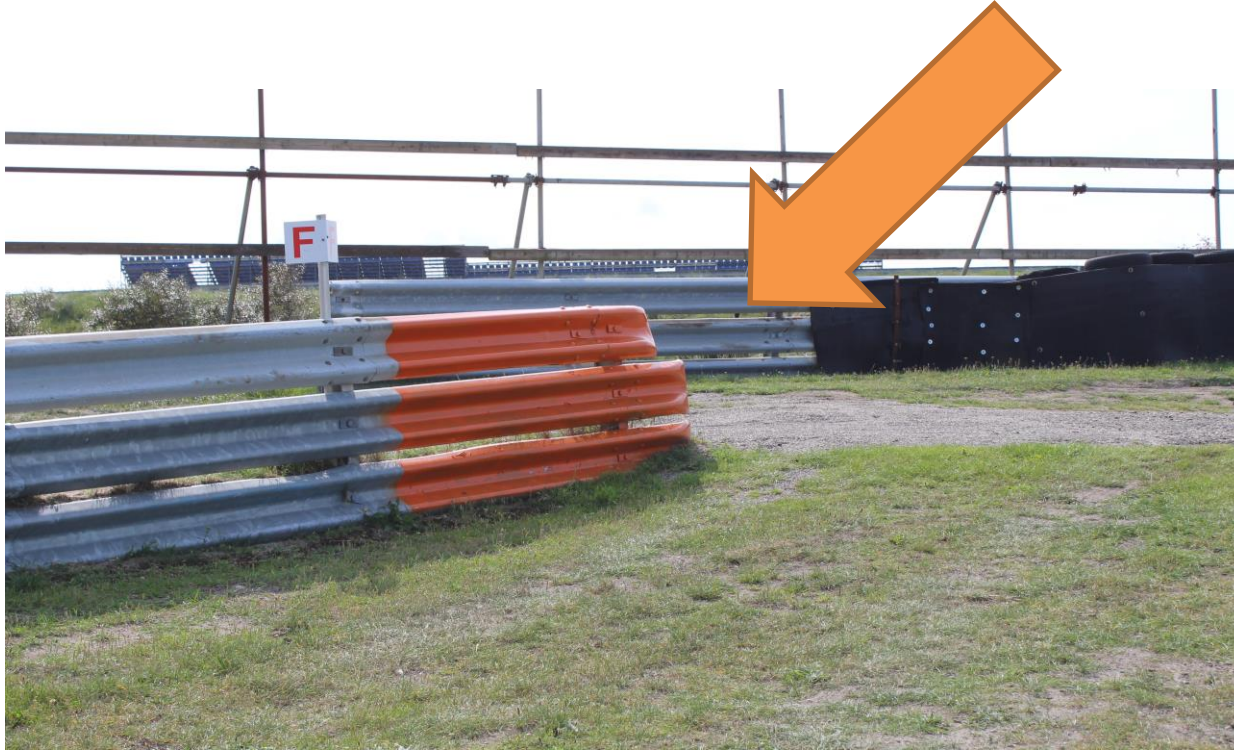
# Start delayed



- In the occasion of problems on the grid or during the formation lap, the Race Director may decide **not** to start the race.  
**The start will be aborted.**
- In this case, the red lights on the starting gantry remains red and orange lights will flash.
- The sign **Start Delayed** will be displayed
- A new formation lap will follow, when the **green lights** on the gantry have been activated (race time starts)



# Safety – Stopping on Track



- An orange armco means an opening in the guardrail.
- It's a safe place to park your car after a technical defect



# Flag Signals – Yellow Flag



- Reduce your speed!
- Double waved yellows: be prepared to change line or to stop
- No overtaking till you past the green flag
- Signal of Danger

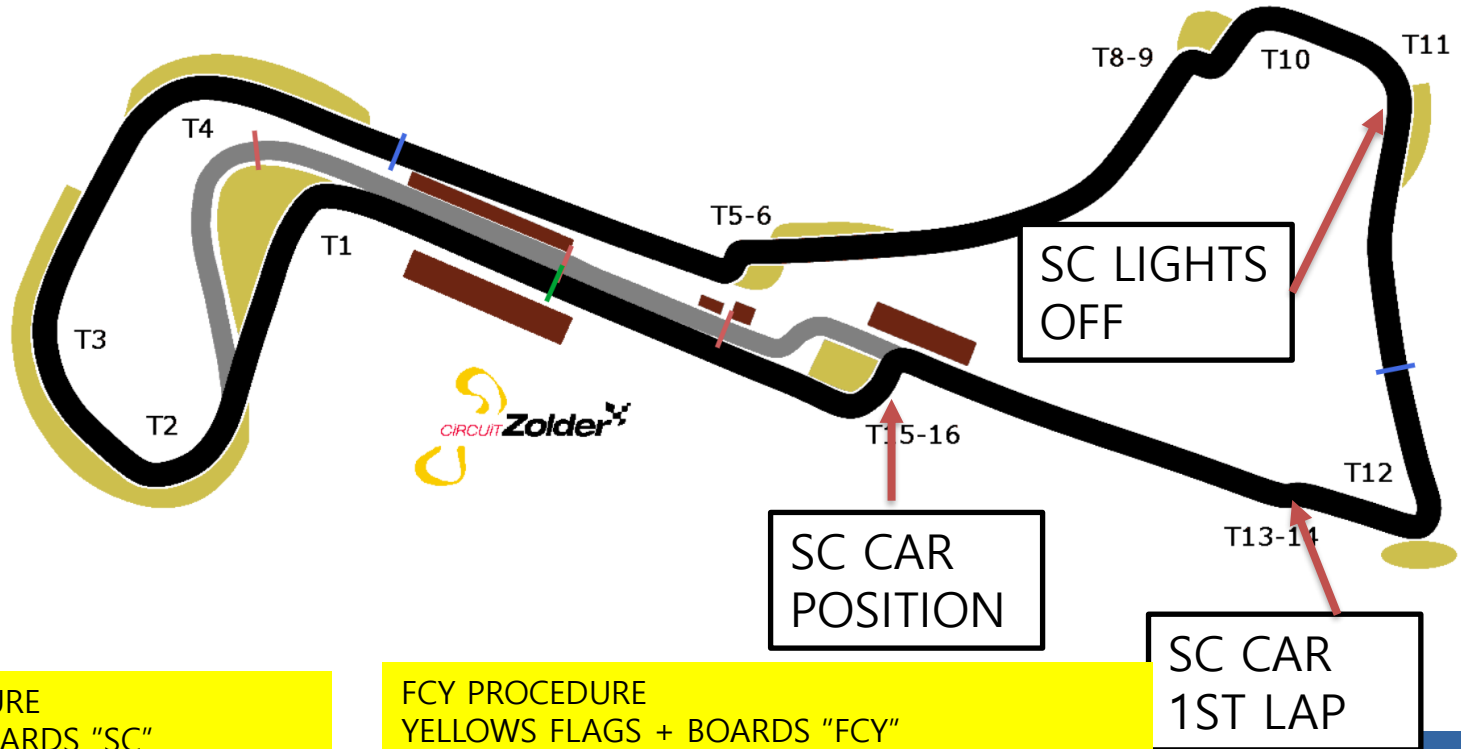




- Release the throttle to 80 KpH
- Don't brake on a straight
- No Overtaking
- Watch out for interventions vehicles on track
- Full Track green: Start racing immediately



# Safety car + FCY



SAFETY CAR PROCEDURE  
YELLOW FLAGS + BOARDS "SC"  
NO OVERTAKING  
WATCH OUT FOR INTERVENTION VEHICLES

FCY PROCEDURE  
YELLOW FLAGS + BOARDS "FCY"  
NO OVERTAKING + 80 KPH  
WATCH OUT FOR INTERVENTION VEHICLES



# Safety car ending



NO OVERTAKING UNTILL THE CONTROL LINE WITH GREEN FLAG



# Flag Signals – Red Flag



- Reduce Speed. Be Prepared to Stop!
- Session is Suspended
- Follow Marshall's Instructions

## Free Practice & Qualifying

All cars into pitlane

## Race

All cars in 1 line before the finish line



# Track Limits T5/T6

FORD  
**FIESTA**  
SPRINT CUP

POWERED BY **Hankook**  
driving emotion





# Track Limits T8/T9



During the qualifying the driver who causes a FCY to place back the cone, will loss his/her best laptime + the laptime set during hitting the cone



# Track Limits T15/T16





## Good to know

Grid race 1 = Result of qualification with the top 10 reversed

Grid race 2 = Result of qualification

WET Race = Rain tyres are permitted, not mandatory. Rain lights turn on

Stay Hydrated

Sunday other Chequered flag next to the black and white version

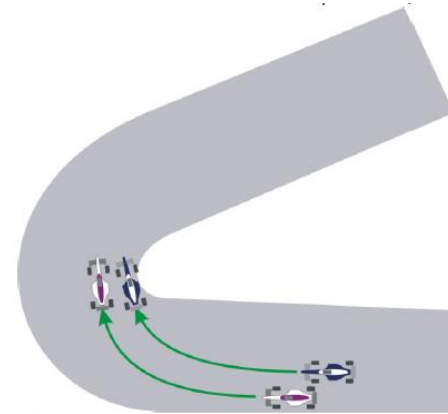


# Driving Conduct

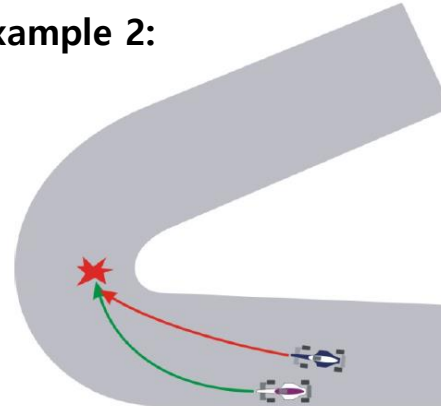
## A penalty may be applied if (causing a collision)

- The inside car overshoots the corner and crashes in the outside car (goes too fast and causes a collision)(example 2)
- The outside car does not leave space for the inside car. The Outside Car must leave at least one car width space inside, allowing the attempt to pass
- (example 3)

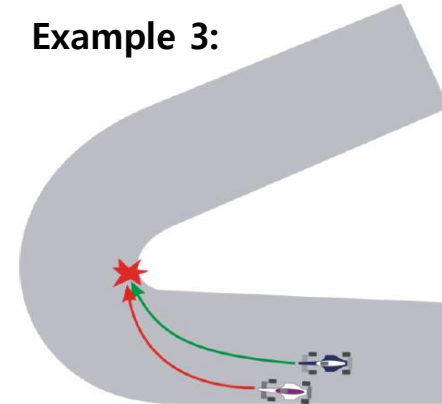
**Example 1:**



**Example 2:**



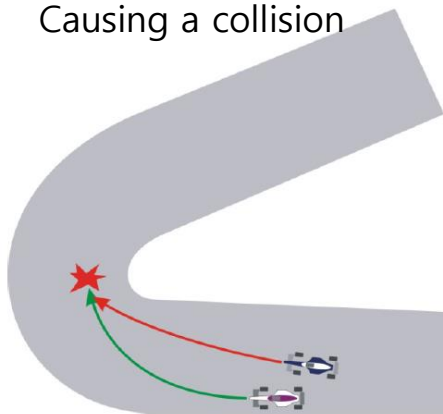
**Example 3:**





# INCIDENTS – OVERTAKING ON THE INSIDE AT THE ENTRY OF A TURN

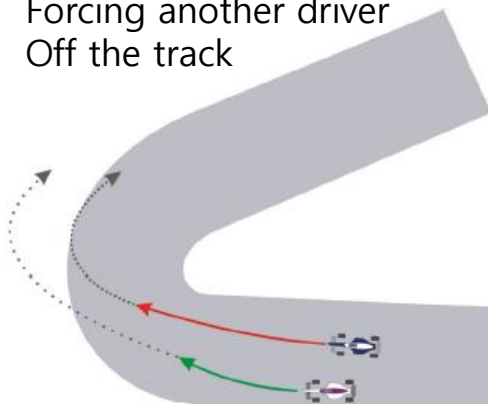
## Example 2: Causing a collision



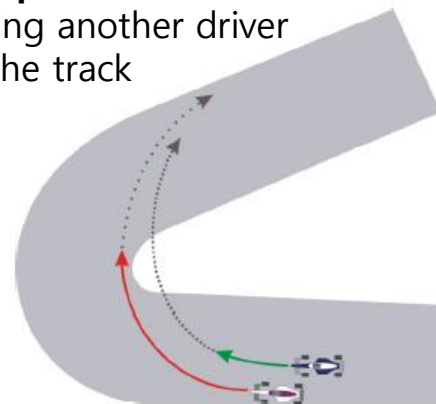
## A penalty may be applied if (Forcing another driver off the track)

- (Example 4) The car on the inside overshoots the corner, but there is no collision. However, the car on the outside is being pushed off the track, but they can both continue.
- (Example 5): The car on the outside is not leaving space for the car on the inside. However, the car on the inside tries to avoid an incident.

## Example 4: Forcing another driver Off the track



## Example 5: Forcing another driver Off the track





# Driving Conduct

## *Examples*

- Jumpstart
- Ignoring flag signals or Instructions from marshals
- Overtaking under yellow, red or after chequered flag
- Speeding under FCY, Pit lane, Yellow.
- Dangerous driving behaviour with or without contact
- Unsportsmanlike behaviour
- Change direction more than once
- Take advantage of an unclear situation
- Track limits



# Driving Conduct

*Penalties will be applied based on a fixed penalty list*

- Deleting (fastest) lap time(s)
- Time penalty
- Position penalty
- Grid penalty
- Starting from pitlane
- Drive through
- Stop and Go
- Stewards decisions

**Penalty can come with extra point(s) on your licence:**

5 Points	drop of 3 places on the grid next race
8 Points	drop of 10 places on the grid next race
10 Points	Start from pit lane next race



# QUESTIONS? MAKE IT A GREAT WEEKEND!



SAFETY – RESPECT - SPORTSMANSHIP